



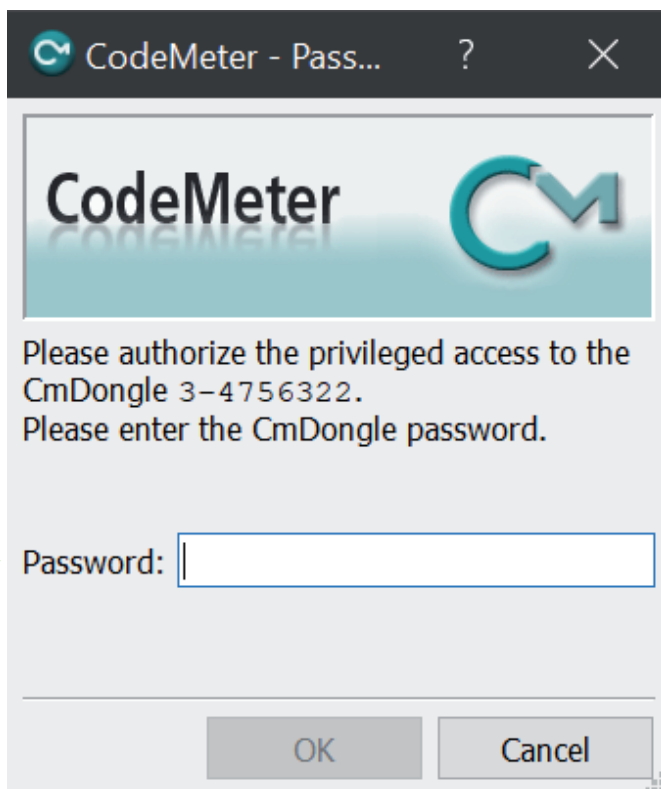
Customer document
License protection
Hardlock

Activation of the hardlock

Valid for all AND products.

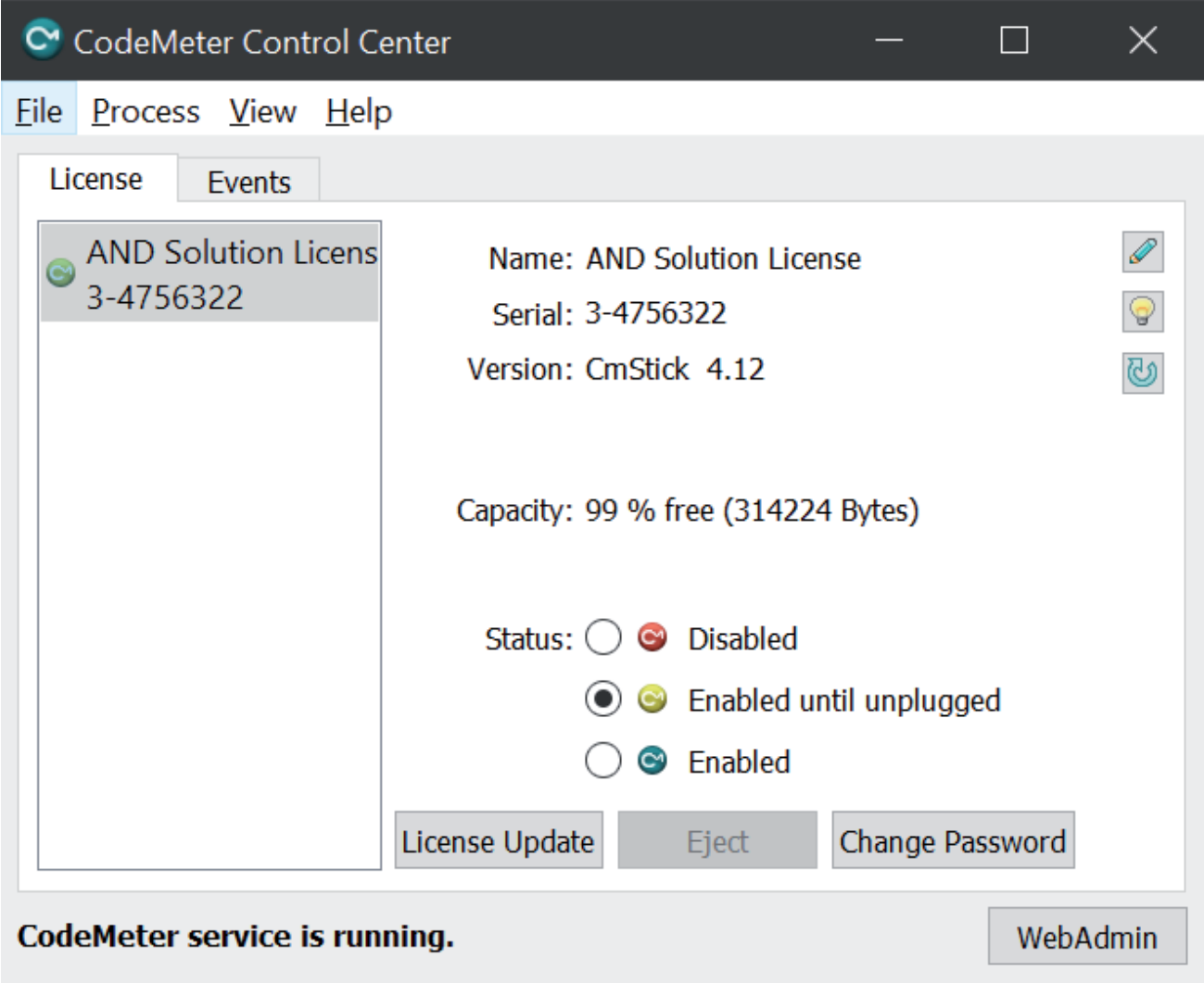
1 Start WIBU management software

After successfully installing AND, the following dialog shows up after connecting the hardlock (CmStick):



In the dialog, type your license password, which has to be requested from AND Solution.

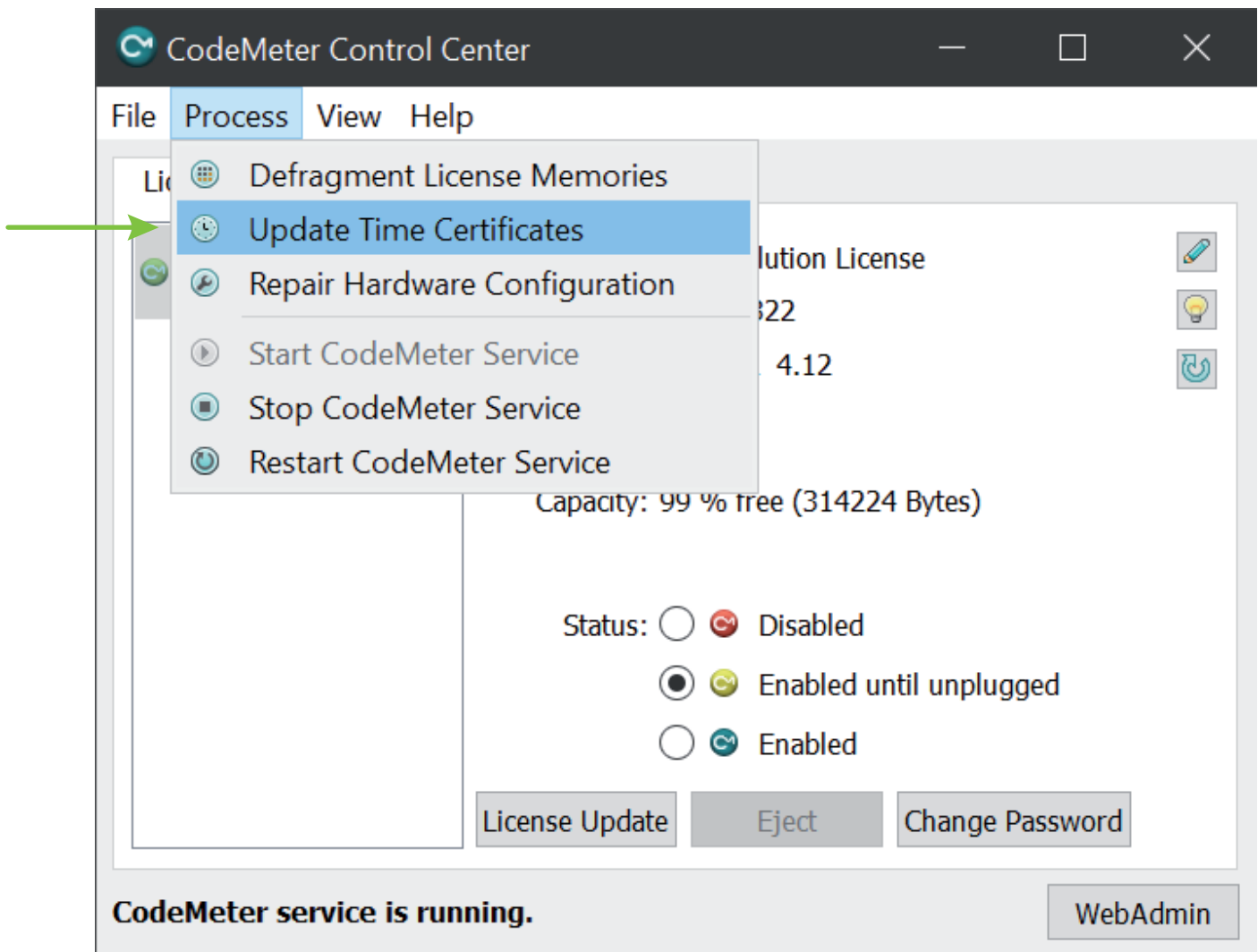
The following window opens:



2 Update time certificates

If you received a time-limited version, the time certificates have to be updated.

For this, please choose "Update time certificates" from the "Process" menu in CodeMeter Control Center.



Please note

If you need additional support, please contact support@and-solution.com